



**Groundbreaking new £7m Urgent Treatment
Centre and A&E expansion at Worthing Hospital**

2024

“Located right at the front of the hospital, this development will create a new entrance for all urgent walk-in attendances, a larger waiting room, and 12 new consultation rooms and clinical support areas. It also clears the way for us to develop a Same Day Emergency Care (SDEC) unit for the first time in the hospital, to be situated where the current UTC is.”

Hospital Director Stephen Mardlin,
22 November 2024

The Friends are formally known as ‘The League of
Worthing Hospitals and Community Friends’.
Registered Charity Number 208291

Contents

	Page
Annual General Meeting agenda	2
Chairman’s message	3
Gifts to the Hospitals 2024	4
Legal and administrative information	5
Trustees report	6
Independent Examiner’s Report	8
Statement of Financial Activities	9
Balance Sheet	10
Become a Supporter	11 & 12

**Annual General Meeting of the
League of Worthing Hospitals and Community Friends**

**Members of the Friends of Worthing Hospitals and public are invited to attend the 74th
Annual General Meeting of the Friends of Worthing Hospitals, in the Friends Cafe,
Ground Floor, North Wing, Worthing Hospital, Worthing, West Sussex, BN11 2DH on
Monday the 9th of June 2025 at 5.00pm.**

AGENDA

- 1. Chairman’s welcome
- 2. Apologies for Absence:
Dr John Bull, Stephen Lyons
- 3. Minutes of 73rd Annual General meeting
- 4. Any Matters Arising
- 5. Chairman’s Annual Report
- 6. Treasurers Statement of Accounts and adoption of the 2024 Accounts
- 7. Election of the General Committee
- 8. Appointment of Auditors and Solicitors
- 9. Any other Business

*Members of “The Friends” can be nominated for election. Nomination letters to
The Hon Treasurer, c/o Flat 2, Langham Court, Grand Avenue, Worthing, West Sussex, BN13 5BW

To arrive no later than the 4th of June 2025



Chairman's Report 2024

Dear Members,

This year we have continued to support the hospital and have funded equipment for the Outpatient Clinic, Beeding Ward, Broadwater Ward, Endoscopy Unit and the Porterage Team as well as donating our share of funds for the Hospital Garden. In addition, we also supported Maple Ward at Meadowfield Hospital for the Partnership Trust, the Urgent Community Response Team and the Tissue Viability Service for the Community Trust, both based at the hospital. We have also continued our tradition of providing Christmas Cheer to all those who are in hospital over the festive period and also supported all the local Community hospitals under our wing.

Our popular Friends Café and shop continues to provide a valuable service to the hospital patients, staff and visitors, and my thanks go to Terry Lawrence his dedicated staff and volunteers who continue to make this operation such a success. Our ward trolley service is much appreciated, and the 24-hour vending machine in the Café is a welcome addition. We have made further progress towards having documentation online and working more efficiently to make best use of and ensure easier access to our funds.

This year has been another year of change for the Charity. We have had several retirements of longstanding Trustees, namely Barbara Aldis, and Marva Stanbrook and we thank them for their contribution to the Charity over many years. We have also had resignations on health grounds from Geoff Lockerbie and Jacqui Campbell and our replacement secretary Angie Bell moved on after a work promotion and we thank them for their valuable work with the Charity.

Due to health reasons, I have recently stood down as Chair, but I will remain a Trustee and continue to support the Charity to the best of my ability. Liz Dolby has kindly taken on the role of acting Chair. My thanks also go to our Treasurer, Sally Jackson, as she has had to deal with all the changes to the way we operate.

The Friends of Worthing Hospitals Annual Report 2024

We are in need of a Secretary and more Trustees, so if anyone is interested, please contact us for a chat about how you could help.

I thank all of the Trustees and our President John Bull for the work and support they have given me this year.



Malcolm Roberts – Chairman

Gifts Made to the Hospitals - 2024

Worthing Hospital, Endoscopy Department: Staff use Microwave oven	£99.98
Worthing Hospital, Our share of garden landscaping North Wing	£34,236.00
Meadowfield Hospital, Maple Ward: Sensory equipment	£2,072.24
Worthing Hospital, Outpatient Clinic: 24 new chairs	£2,866.50
Worthing Hospital, Mental Health Decision Unit: Sensory Items	£167.10
Worthing Hospital, Porterage Team: 1 Concealment trolley	£2,981.23
Worthing Hospital, Seeding Ward, Neonatal: Natus Olympic Brain Monitor	£23,043.00
Worthing Hospital, Broadwater Ward: 3 Tilt Beds	£23,700.00
Total Bids	£89,166.05
Christmas Spend	£3,807.00
Garden Furniture	£10,968.00
Grand Total Spend	£103,941.05

Legal and Administrative Information

Trustees

Malcolm Roberts - Chairman
Peter Bandy
Georgina Fincher-Jones (resigned 8.1.24)
Barbara Aldiss (resigned 10.6.24)
Marva Stanbrook (resigned 10.6.24)
Garry Phillips
Elizabeth Dolby
Jacqui Campbell
Geoff Lockerbie (appointed 8.1.24) (resigned 9.9.24)
Michael Jackson (appointed 9.9.24)

Independent Examiner

MastersFuller
Chartered Certified Accountants 38 Salisbury Road
Worthing West Sussex BN11 1RD

Bankers

HSBC plc
1 Warwick Street Worthing
West Sussex BN1 13DE

President	Dr. John Bull
Hon. Treasurer	Sally Jackson
Hon. Secretary	Angie Bell (resigned 1.2.25)
Shop Manager	Terry Lawrence

Approved by order of the board of trustees on 3rd March 2025 and signed on its behalf by:

Malcolm Roberts – Chairman

Malcolm Roberts - Chairman

Trustees Report

The trustees present their report with the financial statements of the charity for the year ended 31st December 2024. The trustees have adopted the provisions of Accounting and Reporting by Charities: Statement of Recommended Practice applicable to charities preparing their accounts in accordance with the Financial Reporting Standard applicable in the UK and Republic of Ireland (FRS 102) (effective 1 January 2019).

OBJECTIVES AND ACTIVITIES

Objectives and aims

The object of the League is to relieve patients of the Worthing Hospitals who are sick, convalescent, disabled, handicapped, infirm and, generally to support the charitable work of the said Hospitals.

Significant activities

The League runs a shop/cafe for the benefit of patients and staff as part of its objects.

Grantmaking

The grants committee usually meets every month to consider bids for funding from the local NHS trust supported by the League. Requests for funding are considered primarily for their benefit to patients, staff, and visitors.

Volunteers

A weekly trolley service operates around the hospital wards with the help of eight volunteers.

ACHIEVEMENT AND PERFORMANCE

Charitable activities

The League aims to support the local hospitals with the provision of medical equipment and facilities, amenities such as emergency toiletry packs and Christmas presents, and a shop/cafe for the benefit of patients, visitors and staff. The League runs the shop/cafe as part of its primary charitable activities.

Internal and external factors

The League is reliant on University Hospitals Sussex NHS Foundation Trust to house its operations. The Trust provides shop space, office, and storage facilities within Worthing Hospital.

FINANCIAL REVIEW

Financial position

The shop/cafe had a 30% increase in turnover in the year, with a surplus of £98,582 compared with £53,075 in the previous year. It remained open throughout the year to provide food and drink for patients, visitors and staff.

The League spent £89,166 on gifts to local hospitals, including £34,236 contribution towards the landscaping of the adjacent courtyard garden.

Principal funding sources

The League usually makes a surplus on its trading activities which helps to fund its activities. The League also receives donations and legacies from the public.

Reserves policy

The League's reserves (unrestricted funds that have not been designated, excluding tangible fixed assets, stock, debtors, and an estimate of the following year's expenditure) amount to an excess of approximately £146,000. Restricted funds total £71,560 and a further £4,602 have been designated for requests that have already been agreed. The remainder of the League's reserves have been set aside in pursuance of the League's objects when required.

Going concern

There are no material uncertainties which would affect the charity's ability to continue as a going concern.

Funds

The unrestricted fund has been divided into a general fund, and a designated fund. The designated fund represents spending on local hospitals that has been approved by the committee but has not been invoiced to the League at the balance sheet date. At the year end, the designated fund stood at £4,602. The committee approved spending of £52,321 during the year.

FUTURE PLANS

The League will continue to run the shop/cafe at the North wing site.

STRUCTURE, GOVERNANCE AND MANAGEMENT

Governing document

The charity's governing document is its constitution dated January 1949, as amended June 1959, June 1969, June 1993 and 16th December 2002. The charity is an unincorporated charity.

Recruitment and appointment of new trustees

We are constantly identifying ways to attract new trustees and anybody interested in becoming a trustee should contact the Chair.

Organisational structure

The committee of the League by whom the business of the League is conducted and managed are its trustees and are throughout this report referred to as the committee. The constitution requires that the committee shall consist of not less than nine, nor more than seventeen persons: such persons shall be either delegates or elected members. Normally there

would be a maximum of nine elected members, with a third retiring each year. The committee normally meets monthly to administer the charity and there is a sub-committee to manage the shop.

Induction and training of new trustees

Any new trustee receives a documentation pack produced by ATTEND that states their duties and responsibilities. ATTEND training is available to all trustees.

Main activities undertaken for the public benefit

The trustees have considered the Charities Commission general guidance on public benefit when reviewing the aims, objectives, and planned activities of the charity.

Related parties

The League is a member of ATTEND, formerly known as The National Association of Hospital & Community Friends and has benefited from advice from the organisation. Throughout the year the committee has been pleased to have the help of representatives of local health providers at its meetings.

Risk management

The trustees have a duty to identify and review the risks to which the charity is exposed and to ensure appropriate controls are in place to provide reasonable assurance against fraud and error. Risks to the League are managed by the production of monthly accounts to the trustees and adherence to the constitution, rules and regulations relating to the charity and prudent management of the League including obtaining professional advice when thought fit.

REFERENCE AND ADMINISTRATIVE DETAILS

Registered Charity number: 208291

Principal address:

Worthing Hospital

Lyndhurst Road

Worthing

West Sussex BN11 2DH

Independent Examiner's Report

Independent examiner's report to the trustees of League of Worthing Hospitals & Community Friends

I report to the charity trustees on my examination of the accounts of League of Worthing Hospitals & Community Friends (the Trust) for the year ended 31st December 2024.

Responsibilities and basis of report

As the charity trustees of the Trust you are responsible for the preparation of the accounts in accordance with the requirements of the Charities Act 2011 ('the Act').

I report in respect of my examination of the Trust's accounts carried out under Section 145 of the Act and in carrying out my examination I have followed all applicable Directions given by the Charity Commission under Section 145(5)(b) of the Act.

Independent examiner's statement

Since your charity's gross income exceeded £250,000 your examiner must be a member of a listed body. I can confirm that I am qualified to undertake the examination because I am a member of the Association of Chartered Certified Accountants, which is one of the listed bodies.

I have completed my examination. I confirm that no material matters have come to my attention in connection with the examination giving me cause to believe that in any material respect:

1. accounting records were not kept in respect of the Trust as required by Section 130 of the Act; or
2. the accounts do not accord with those records; or
3. the accounts do not comply with the applicable requirements concerning the form and content of accounts set out in the Charities (Accounts and Reports) Regulations 2008 other than any requirement that the accounts give a true and fair view which is not a matter considered as part of an independent examination.

I have no concerns and have come across no other matters in connection with the examination to which attention should be drawn in this report in order to enable a proper understanding of the accounts to be reached.



IM Walker FCCA
MastersFuller
Chartered Certified Accountants
38 Salisbury Road
Worthing
BN11 1RD
3rd March 2025

Statement of Financial Activities

for the Year Ended 31st December 2024


	2024				2023
	Unrestricted funds £	Designated funds £	Restricted funds £	Total funds £	Total funds £
INCOME AND ENDOWMENTS					
Donations and legacies	13,564	-	56,850	70,414	20,688
Other trading activities	686,679	-		686,679	527,130
Investment income	7,275	-	-	7,275	4,801
Total	707,518	-	56,850	764,368	552,619
EXPENDITURE ON					
Raising funds					
Other trading activities	590,890	-	-	590,890	474,055
	590,890	-	-	590,890	474,055
Charitable activities					
Fundraising	437			437	597
Gifts to Hospitals	3,807	89,166	-	92,973	44,077
Other	14,475	-		14,475	16,349
Total	609,609	89,166	-	698,775	535,078
NET INCOME/(EXPENDITURE)	97,909	-89,166	56,850	65,593	17,541
Transfers between funds	-42,321	42,321	-		
Net movement in funds	55,588	-46,845	56,850	65,593	17,541
RECONCILIATION OF FUNDS					
Total funds brought forward	328,813	51,447	14,710	394,970	377,429
TOTAL FUNDS CARRIED FORWARD	384,401	4,602	71,560	460,563	394,970


Balance Sheet

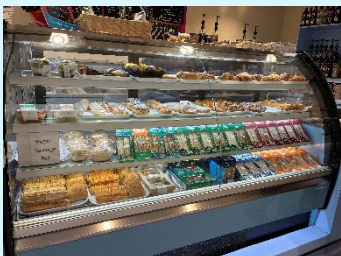
at 31st December 2024

	Unrestricted funds	Designated funds	Restricted funds	2024 Total funds	2023 Total funds
	£	£	£	£	£
FIXED ASSETS					
Tangible assets	28,758			28,758	30,387
CURRENT ASSETS					
Stocks	9,494			9,494	7,029
Cash at bank and in hand	383,616	4,602	71,560	459,778	391,584
	393,110	4,602	71,560	469,272	398,613
CREDITORS					
Amounts falling due within one year	-37,467			-37,467	-34,030
NET CURRENT ASSETS	355,643	4,602	71,560	431,805	364,583
TOTAL ASSETS LESS CURRENT LIABILITIES	384,401	4,602	71,560	460,563	394,970
NET ASSETS	384,401	4,602	71,560	460,563	394,970
FUNDS					
Unrestricted funds				389,003	380,260
Restricted funds				71,560	14,710
TOTAL FUNDS				460,563	394,970

The financial statements were approved by the Board of Trustees and authorised for issue on 3rd March 2025 and were signed on its behalf by:


Malcolm Roberts – Chairman


Gary Phillips – Trustee



The day's food selection on display at the Friends Cafe

Become a Supporter

of your local Worthing Hospitals charity

Everything you buy in our North Wing Cafe & shop directly contributes to the Charity's funds. We use the money to help patients, staff and visitors.

The cafe & shop are open: Mon to Fri 7am - 5pm & Sat 9am - 4pm

You can support us in other ways to by volunteering, raising funds, sponsoring activities or becoming a Trustee of the charity. To contact us, send this completed form to our secretary or email the Secretary at: secretary@friendswh.org.uk

My details are:

Full Name: Mr/Ms/Miss/Mrs.....

Address:

Postcode Email Address

GIFT AID DECLARATION: Boost your donation by 25p of Gift Aid for every £1 you donate. Gift Aid is reclaimed by the charity from the tax you pay for the current year. Your address is needed to identify you as a current UK taxpayer.

I confirm that I would like my donation to **THE FRIENDS OF WORTHING HOSPITALS** (Charity Number 208291) to be treated as a Gift Aid donation. I am a UK taxpayer and understand that if I pay less Income Tax and/or Capital Gains Tax than the amount of Gift Aid claimed on all my donations in that tax year it is my responsibility to pay any difference.

Signature Date

(Please print all information clearly)

Data Protection Act 1998:

Please note that the charity uses computer systems to record membership information. Under the Data Protection Act 1998, it is necessary for you to be informed of this. Further details can be found on our website www.friendswh.org.uk

www.friendswh.org.uk

Registered Charity Number 208291



Every day is a busy day
at the Friends Café

Become a Supporter

of your local Worthing Hospitals charity

YES I would like to become a **REGULAR** supporter of the Friends of Worthing Hospital. Please add my name and email address to the annual membership list which is compiled in June each year. The annual subscription is £10 per year. Please complete the details overleaf and send the form to us by post or alternatively email our secretary; secretary@friendswh.org.uk. Either way we will contact you and set up a payment method. Thank you for your generous support

YES I would like to make a **ONE-OFF** donation and support the Friends of Worthing Hospitals. We thank you for your help

Please tick as appropriate:

- ☐ An easy payment by bank transfer to:
Friends of Worthing Hospitals
Bank Sort Code: 40 - 47 - 25 Account No: 71829467
(including a reference name if appropriate)
- ☐ **OR** make a donation through our Just Giving page.
- ☐ **OR** send a cheque to “Friends of Worthing Hospitals”



Ultrakart Mobile
Beverage Cart on a ward

And if you can **Gift Aid** your donation as a UK taxpayer, or wish to register your donation, please fill in the information overleaf and send it to our Secretary by post to:

Secretary, Friends of Worthing Hospitals,
c/o The Friends Café, North Wing,
Worthing Hospital, Lyndhurst Road,
WORTHING, BN11 2DH.